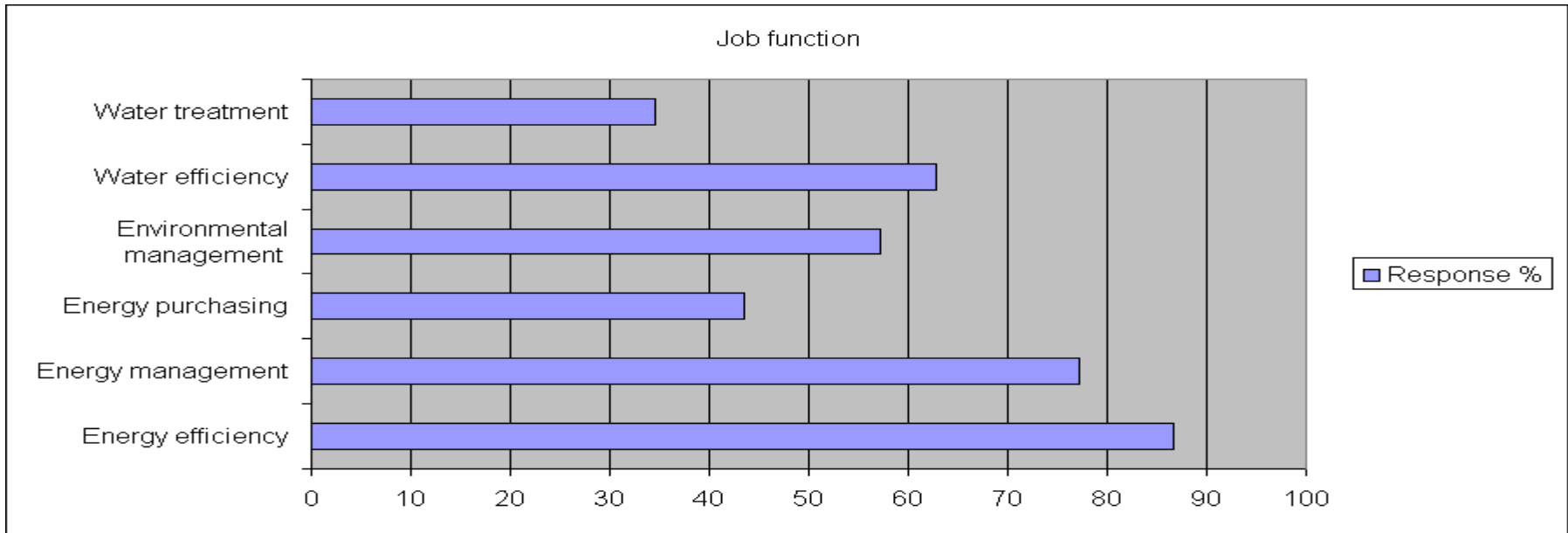
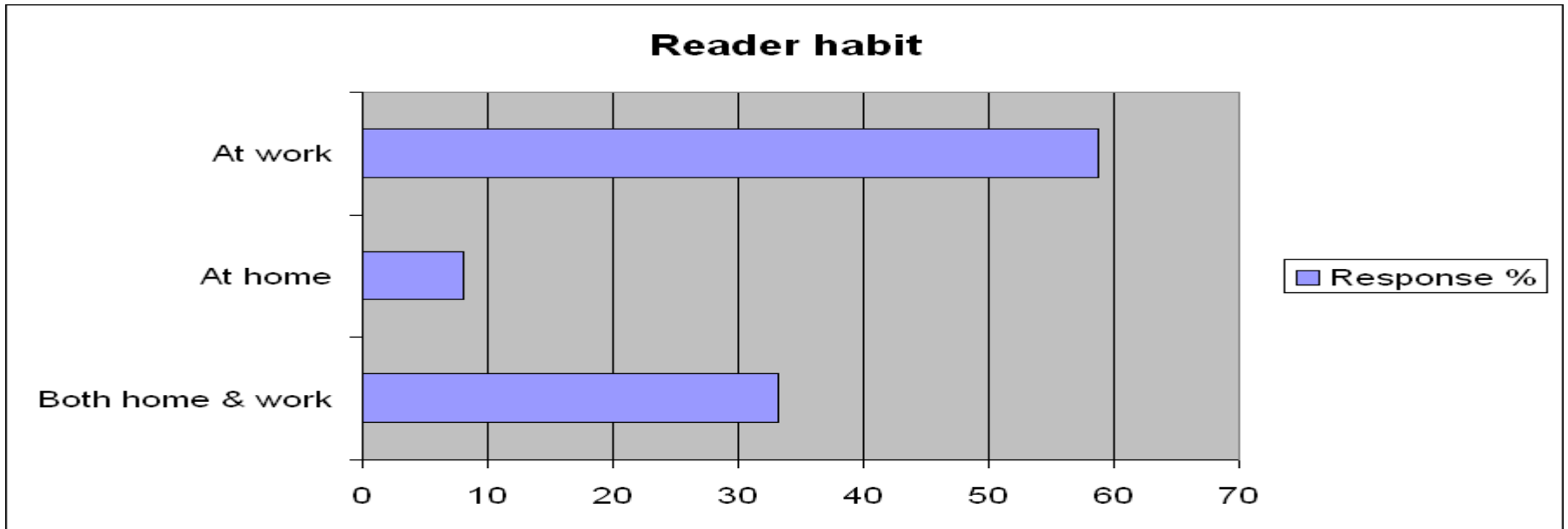


Are you involved in any of the following?



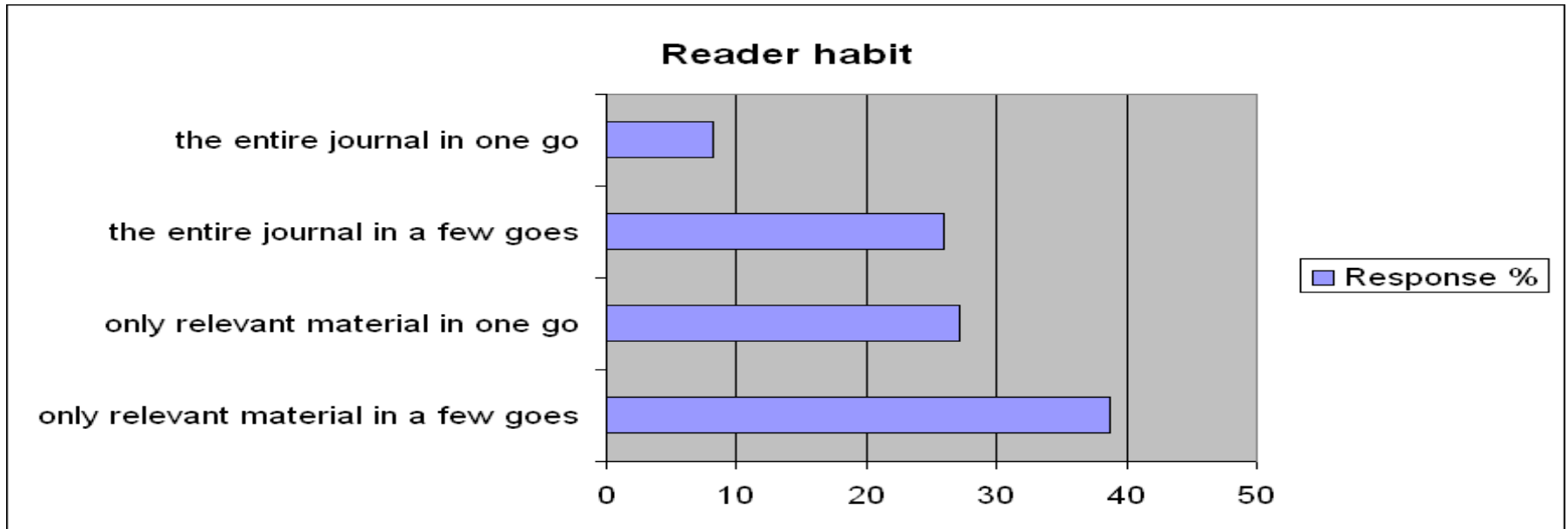
Job function	Response %
Energy efficiency	86.72
Energy management	77.16
Energy purchasing	43.43
Environmental management	57.16
Water efficiency	62.84
Water treatment	34.48

Where do you tend to read your copy of Water Energy & Environment journal?



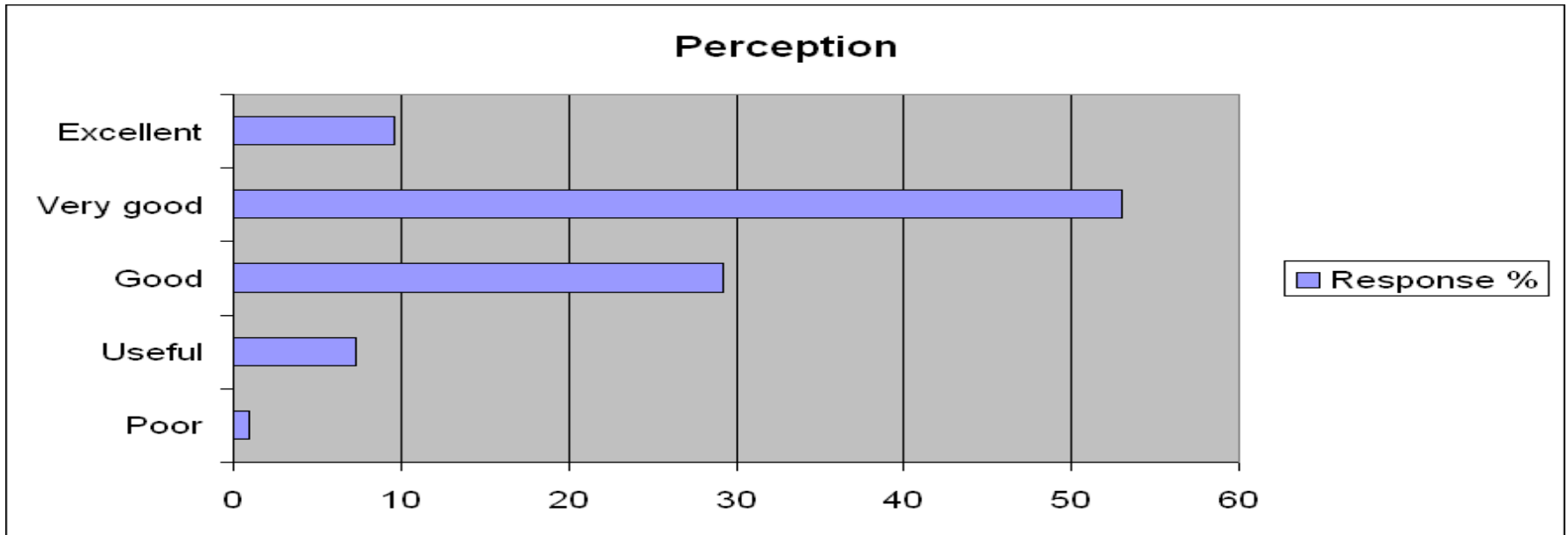
Reader habit	Response %
Both home & work	33.13
At home	8.06
At work	58.81

How do you tend to read Water Energy & Environment?



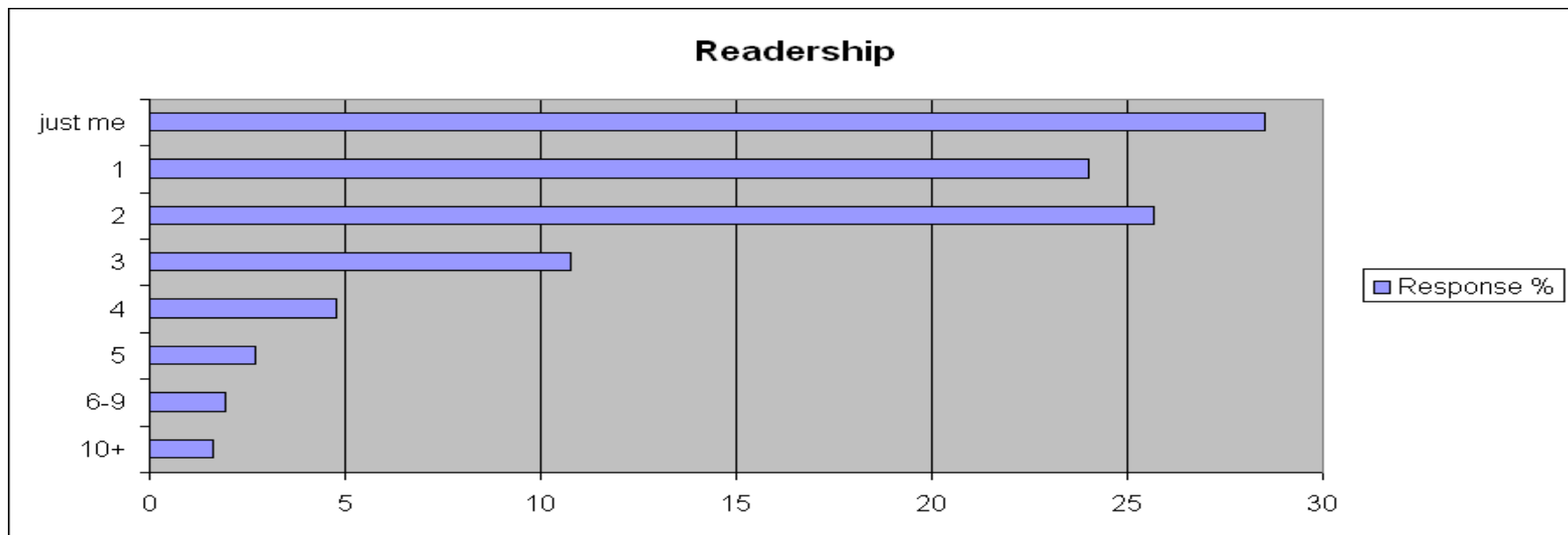
Reader habit	Response %
only relevant material in a few goes	38.66
only relevant material in one go	27.16
the entire journal in a few goes	25.97
the entire journal in one go	8.21

How would you rate the overall content of Water Energy & Environment?



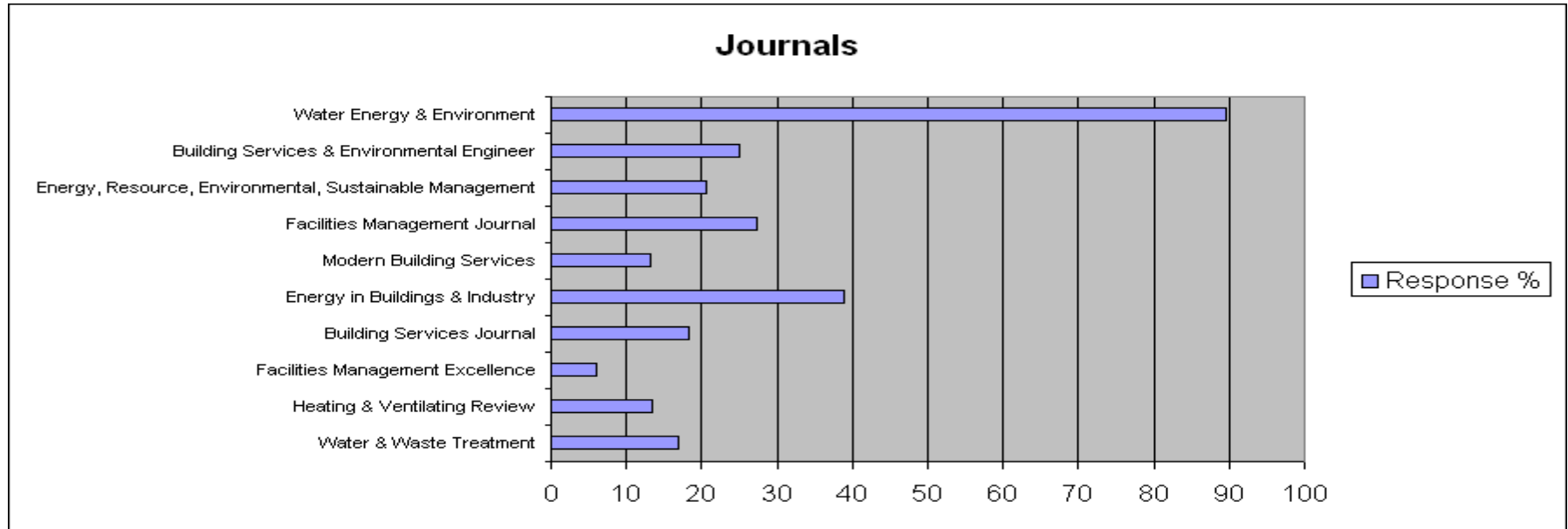
Perception	Response %
Poor	0.9
Useful	7.31
Good	29.25
Very good	52.99
Excellent	9.55

How many colleagues read your copy of Water Energy & Environment?



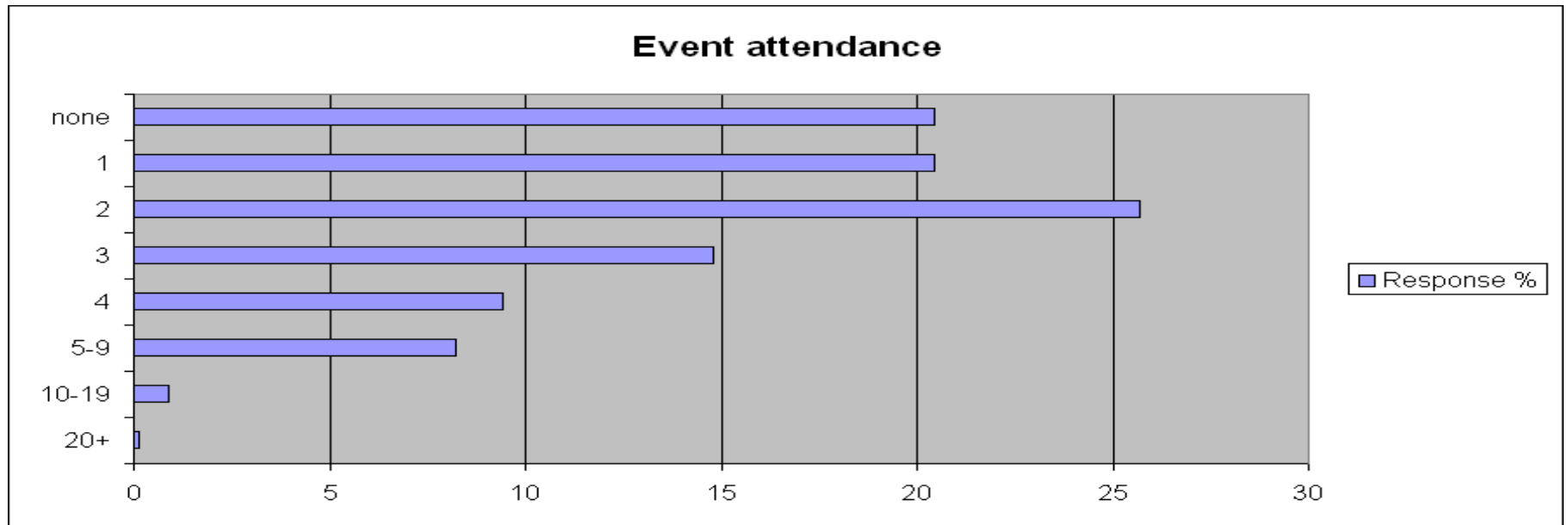
Readership	Response %
10+	1.64
6-9	1.94
5	2.69
4	4.78
3	10.75
2	25.67
1	24.03
just me	28.51

Which journals do you receive and read?



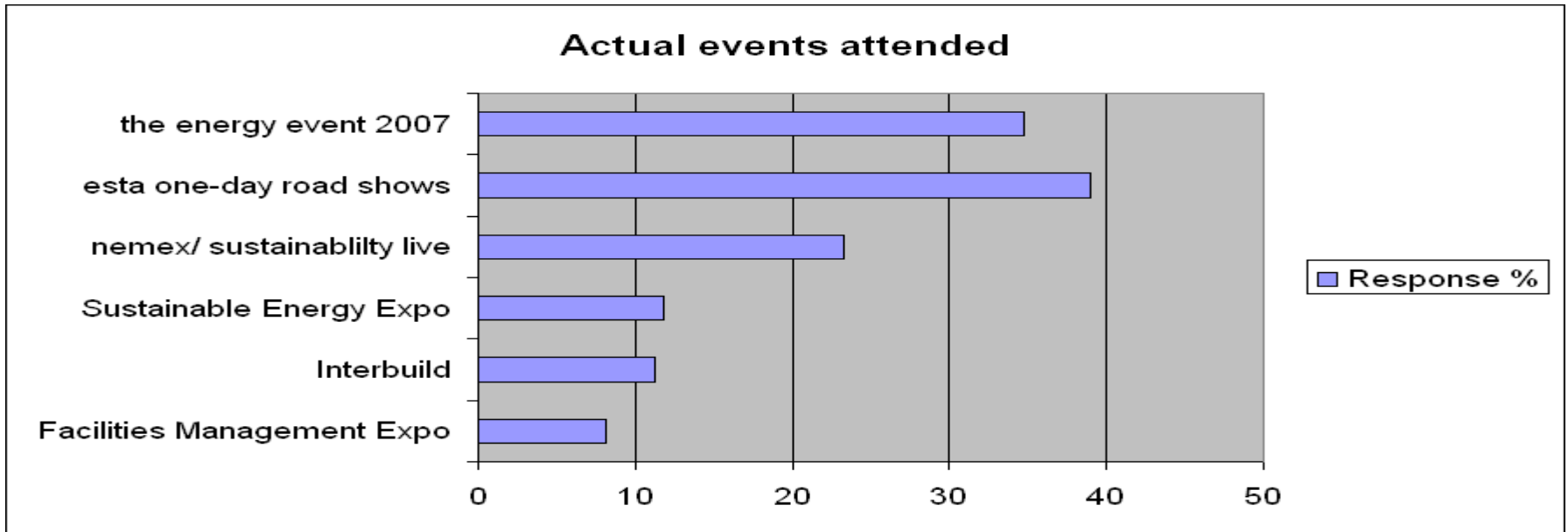
Journals	Response %
Water & Waste Treatment	17
Heating & Ventilating Review	13.4
Facilities Management Excellence	6.1
Building Services Journal	18.4
Energy in Buildings & Industry	38.8
Modern Building Services	13.3
Facilities Management Journal	27.3
Energy, Resource, Environmental, Sustainable Management	20.6
Building Services & Environmental Engineer	25.1
Water Energy & Environment	89.6

How many energy related events and conferences have you attended in the last 12 months?



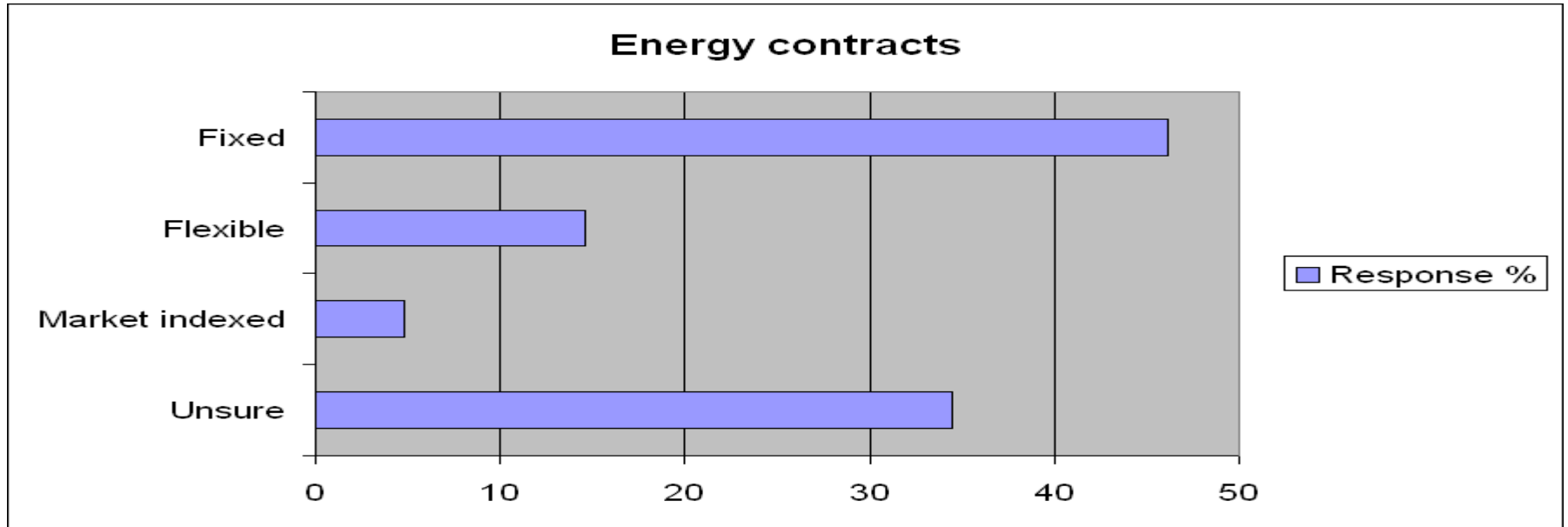
Event attendance	Response %
20+	0.15
10-19	0.9
5-9	8.21
4	9.4
3	14.78
2	25.67
1	20.45
none	20.45

Did you attend any of the following events?



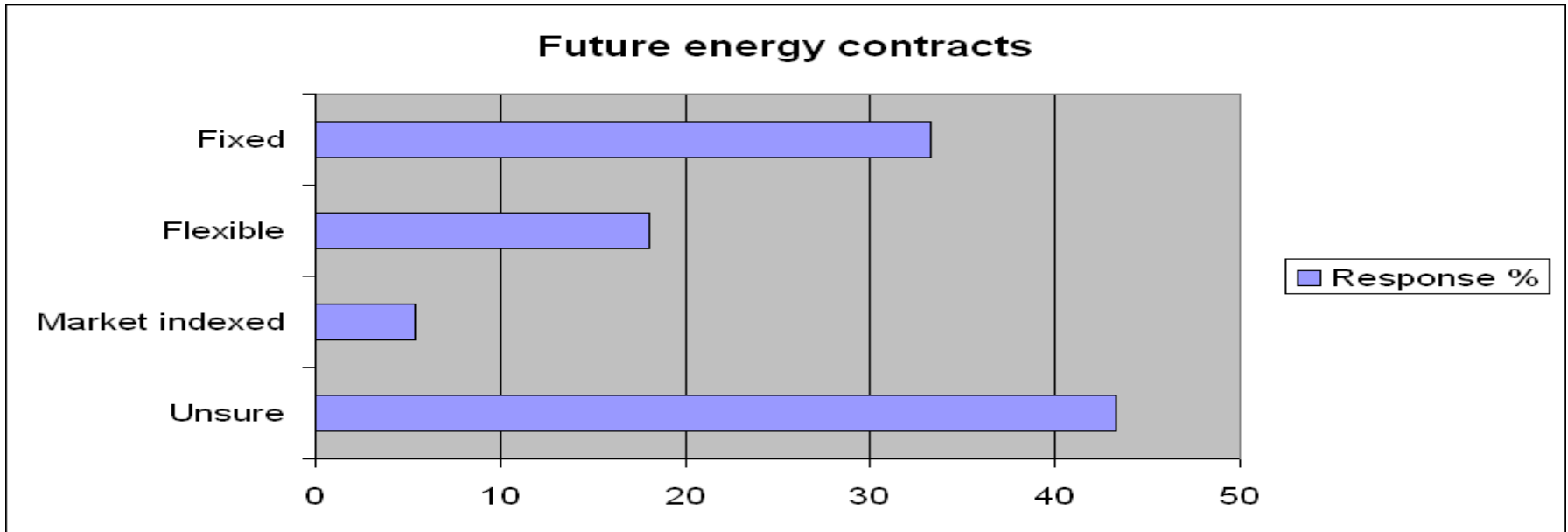
Event attendance	Response %
Facilities Management Expo	8.1
Interbuild	11.3
Sustainable Energy Expo	11.8
nemex/ sustainabililty live	23.3
esta one-day road shows	39
the energy event 2007	34.7

What type of electricity and gas contracts does your company currently have?



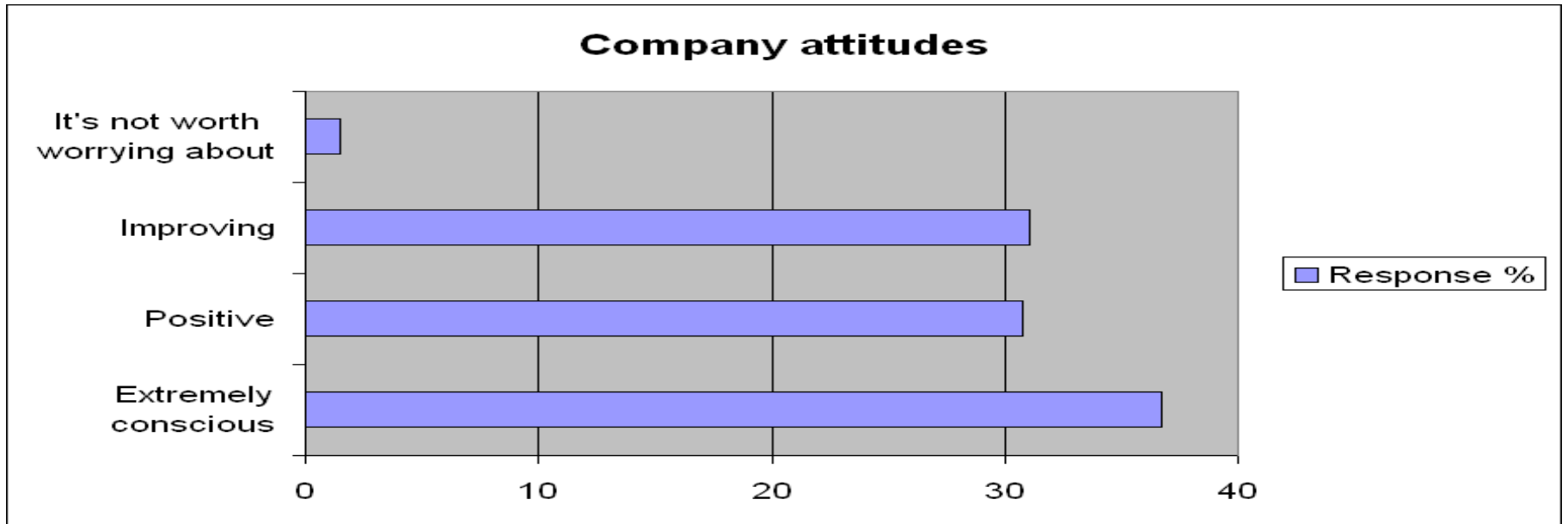
Energy Contract	Response %
Unsure	34.48
Market indexed	4.78
Flexible	14.63
Fixed	46.12

Why type of electricity and gas contracts do you believe your company will opt for the next time you re-negotiate?



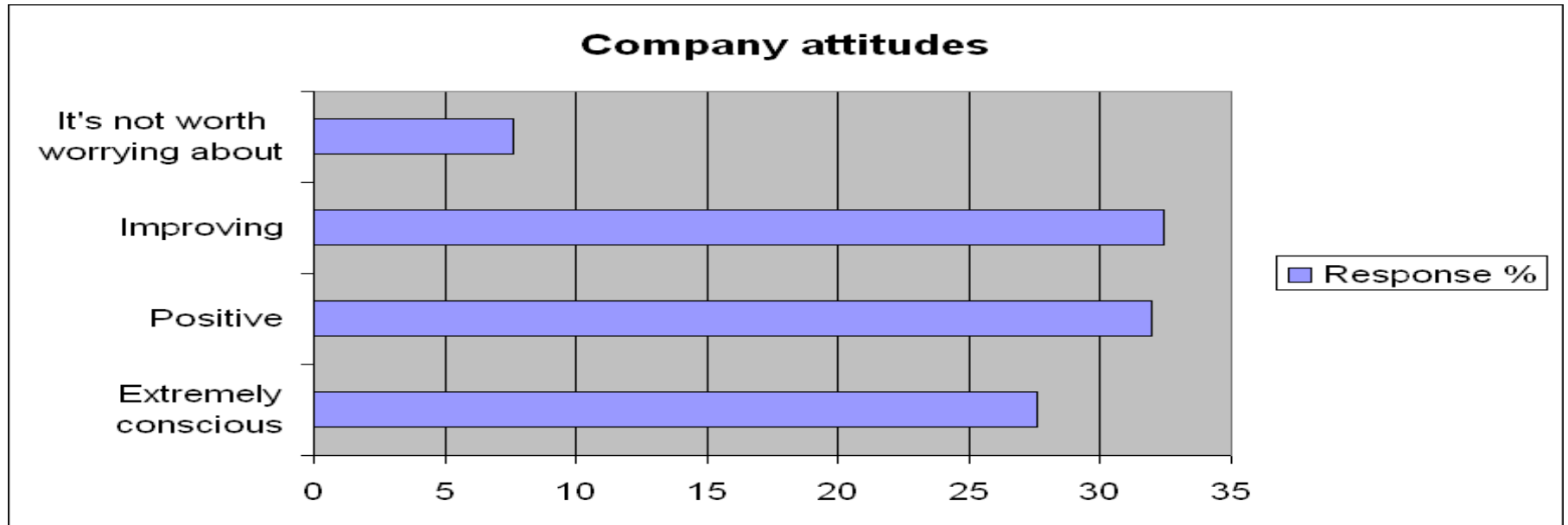
Energy Contract	Response %
Unsure	43.28
Market indexed	5.37
Flexible	18.06
Fixed	33.28

What is your company's attitude toward energy management & efficiency?



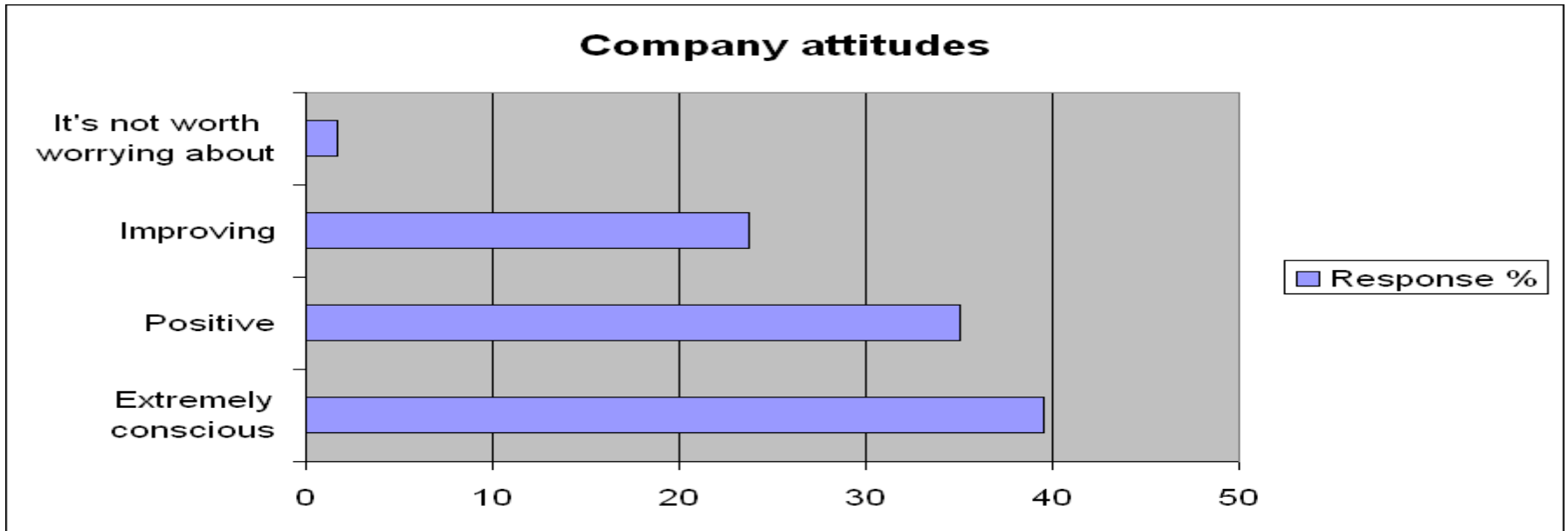
Attitudes	Response %
Extremely conscious	36.72
Positive	30.75
Improving	31.04
It's not worth worrying about	1.49

What is your company's attitude toward water efficiency?



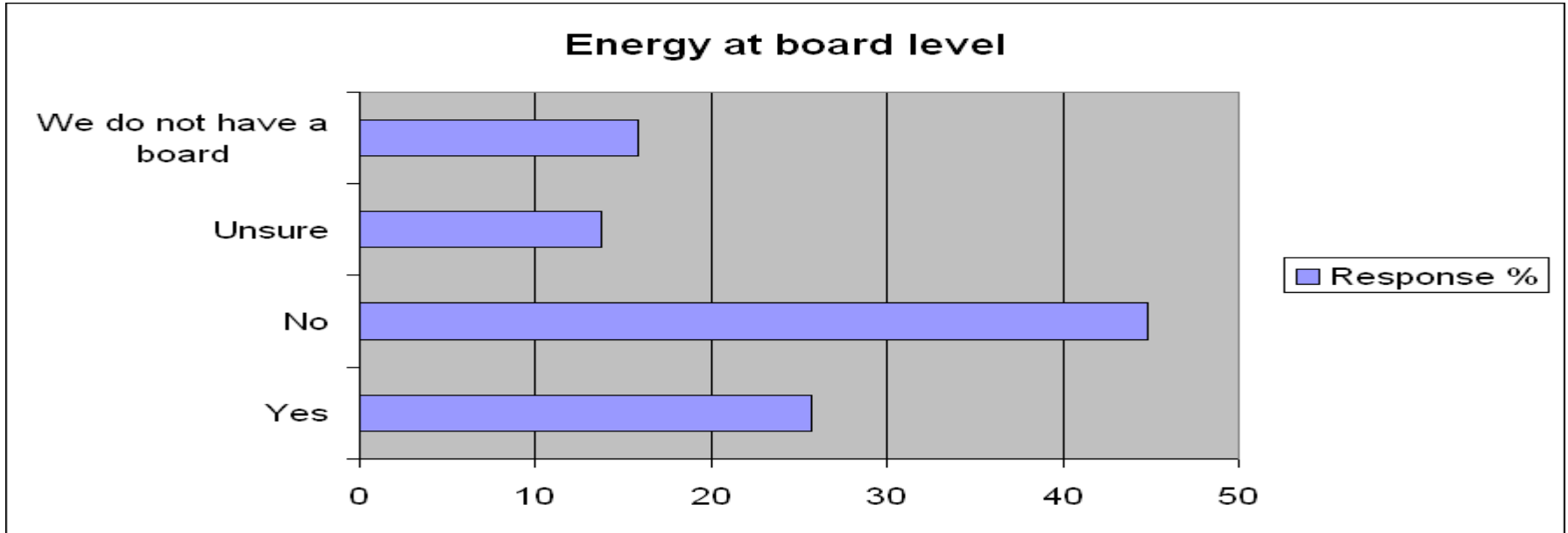
Attitudes	Response %
Extremely conscious	27.61
Positive	31.94
Improving	32.4
It's not worth worrying about	7.61

What is your company's attitude toward environmental management?



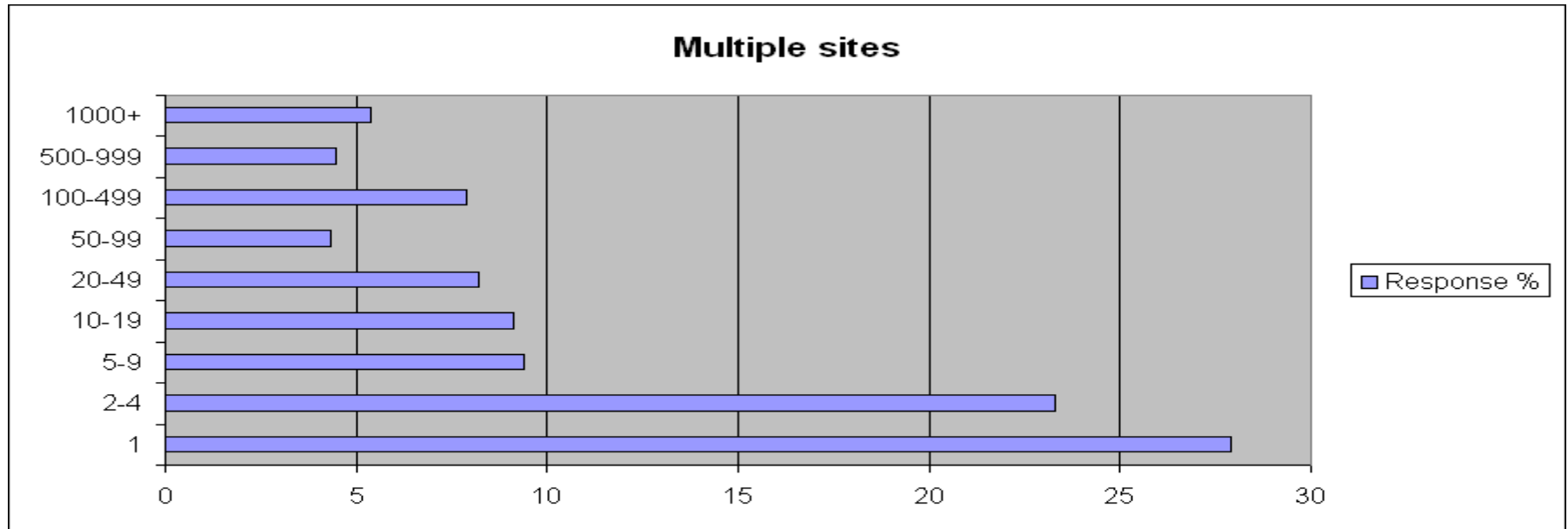
Attitudes	Response %
Extremely conscious	39.55
Positive	35.07
Improving	23.73
It's not worth worrying about	1.64

Does your head of energy sit on the board of directors?



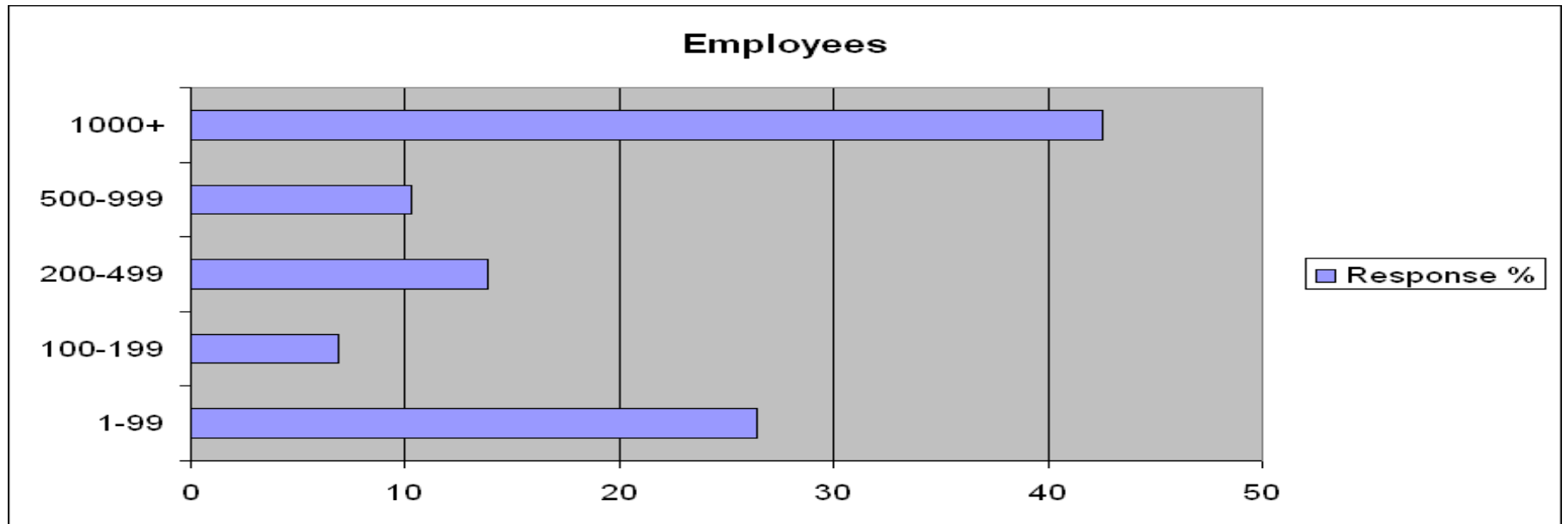
Energy at board level	Response %
Yes	25.67
No	44.78
Unsure	13.73
We do not have a board	15.82

How many sites does your company have in the UK?



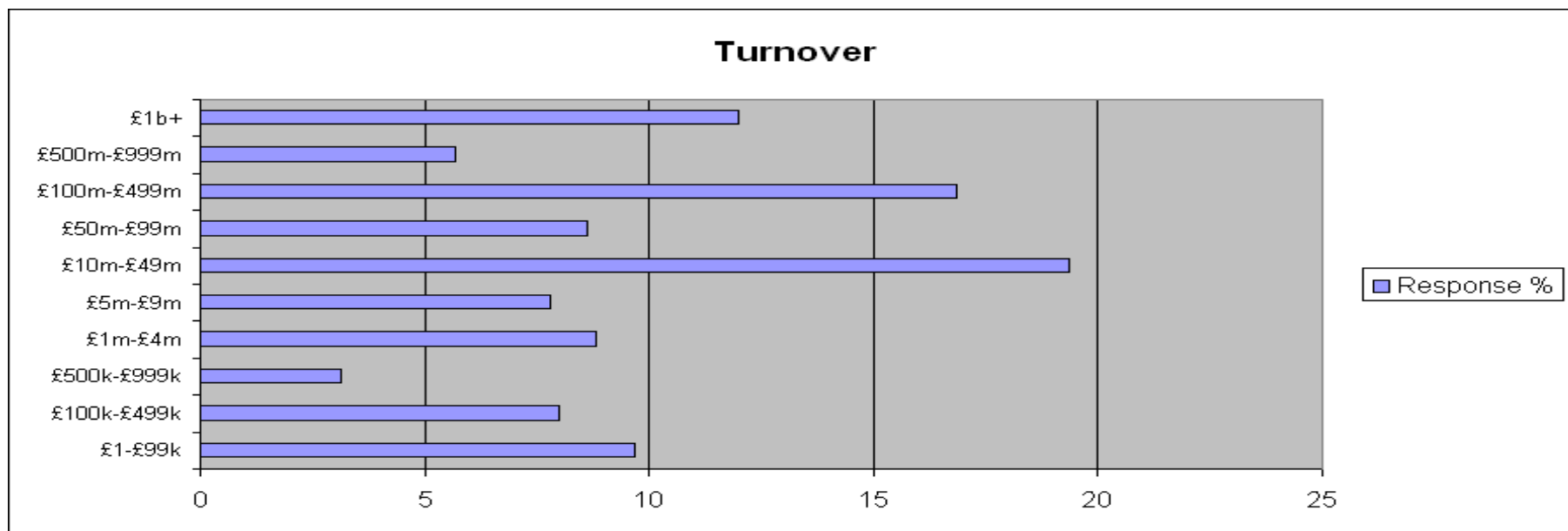
Multiple sites	Response %
1	27.91
2-4	23.28
5-9	9.4
10-19	9.1
20-49	8.21
50-99	4.33
100-499	7.91
500-999	4.48
1000+	5.37

How many employees does your company have in the UK?



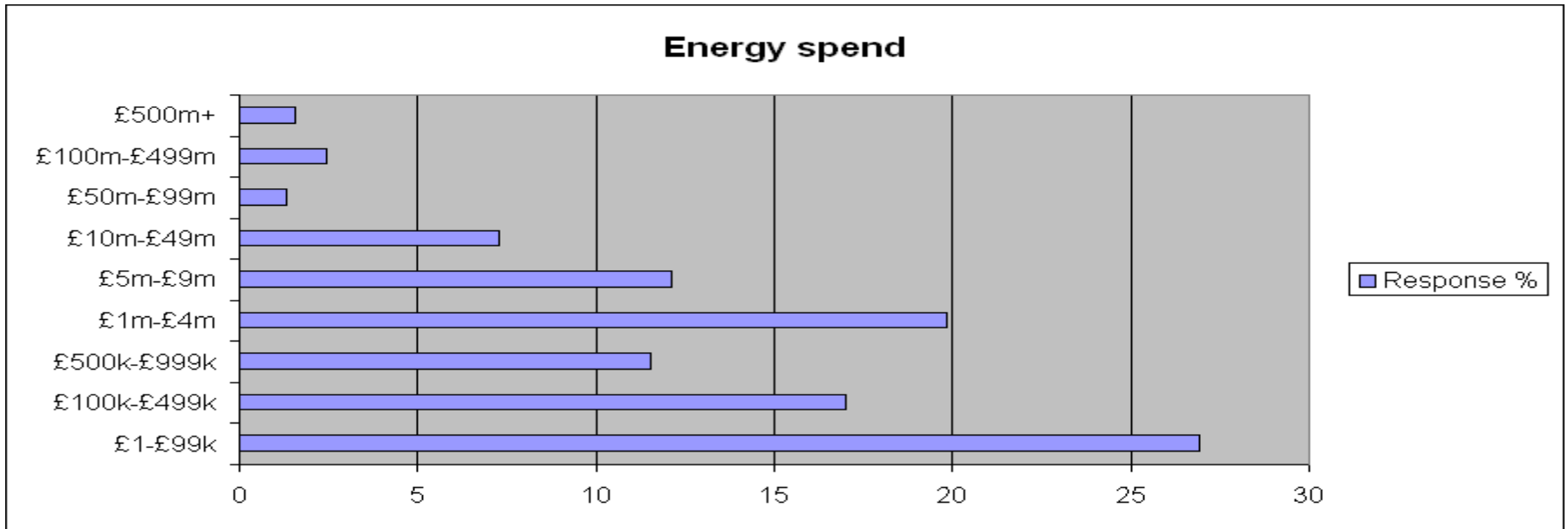
Employees	Response %
1-99	26.42
100-199	6.87
200-499	13.88
500-999	10.3
1000+	42.54

What is your companies annual turnover in the UK?



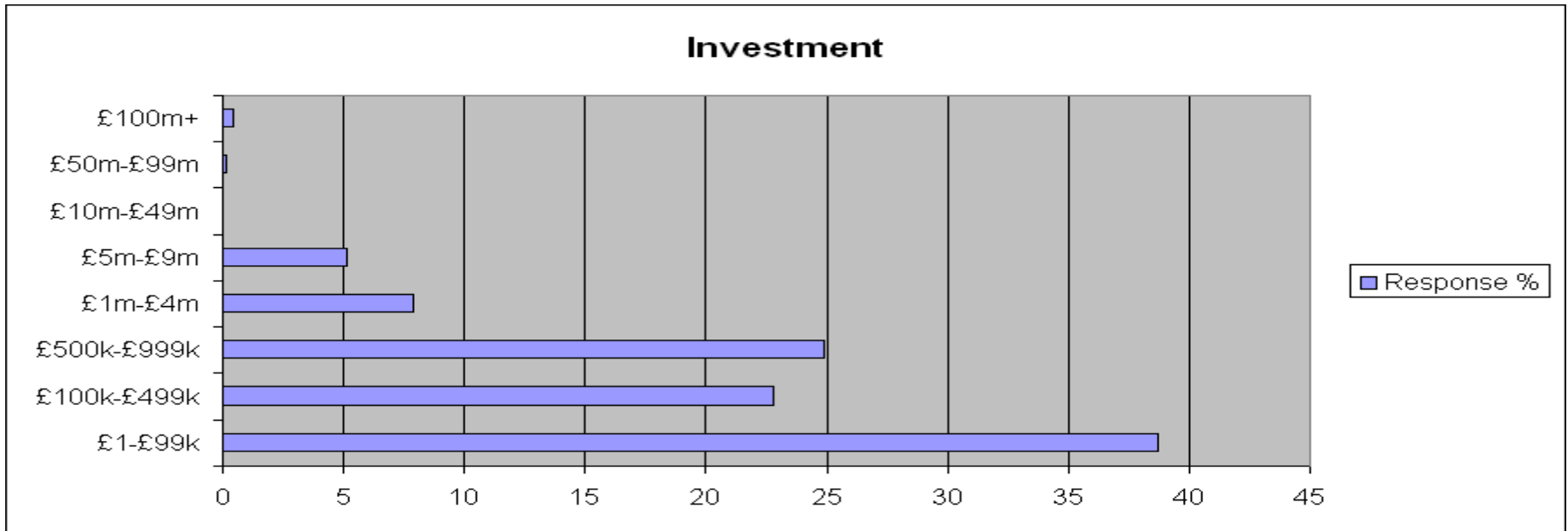
Turnover	Response %
£1-£99k	9.68
£100k-£499k	8
£500k-£999k	3.15
£1m-£4m	8.8
£5m-£9m	7.78
£10m-£49m	19.36
£50m-£99m	8.63
£100m-£499m	16.84
£500m-£999m	5.68
£1b+	12

What is your company's UK annual spend on electricity & gas contracts?



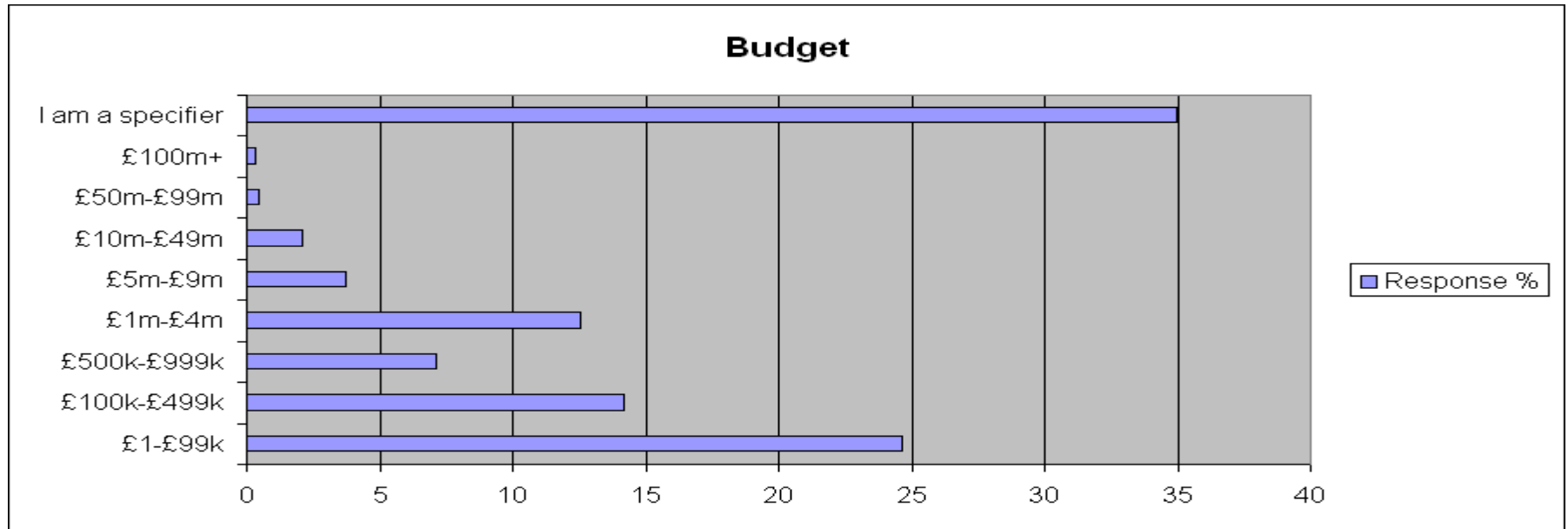
Energy spend	Response %
£1-£99k	26.93
£100k-£499k	16.99
£500k-£999k	11.52
£1m-£4m	19.86
£5m-£9m	12.14
£10m-£49m	7.28
£50m-£99m	1.32
£100m-£499m	2.42
£500m+	1.54

What is your company's UK annual spend on energy management & efficiency measures?



Investment	Response %
£1-£99k	38.72
£100k-£499k	22.79
£500k-£999k	24.9
£1m-£4m	7.87
£5m-£9m	5.12
£10m-£49m	0
£50m-£99m	0.15
£100m+	0.45

How much budget are you personally responsible for per annum?



Budget	Response %
£1-£99k	24.63
£100k-£499k	14.18
£500k-£999k	7.11
£1m-£4m	12.54
£5m-£9m	3.73
£10m-£49m	2.09
£50m-£99m	0.45
£100m+	0.3
I am a specifier	34.97